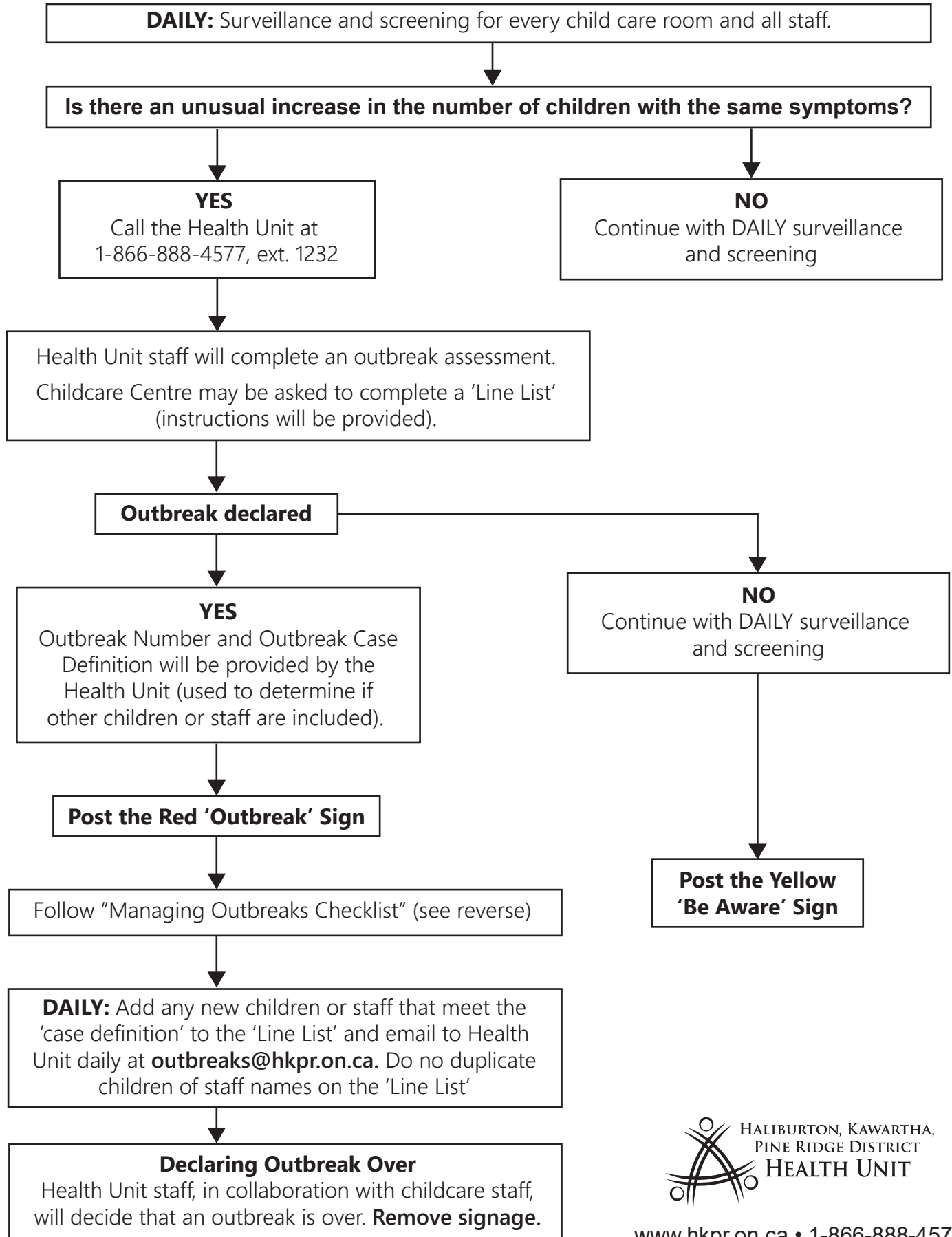


Child Care Illness: Managing Outbreaks



Managing Outbreaks Checklist

Call the Health Unit IMMEDIATELY when you suspect an outbreak. Health Unit staff will review the following outbreak control measures with you to help get the outbreak under control:

- Separate sick children from well children until they can be picked up by a parent/guardian. Consider having a designated isolation area (e.g. sick room).
- Send sick staff home.
- Sick children and staff who are sent home should follow the below recommendations (these are general guidelines and may change for each outbreak):
 - For vomiting and/or diarrhea - remain home for a minimum of 48 hours **after** symptoms have resolved.
 - For cold/flu-like symptoms - remain home until fever and symptoms have improved for at least 24 hours. Wear a mask for 10 days after symptoms started unless a COVID-19 test has been complete and is negative.
- Notify all parents/guardians and all staff of the outbreak.
 - Post signage indicating outbreak (RED Outbreak Sign)
 - Talk to Health Unit staff about a letter that can be sent to parents/guardians notifying them of the outbreak and what they can do if their child becomes ill. This includes sending the letter to parents/guardians of newly enrolled children.
- Suspend all group sensory play and water play for the duration of the outbreak.
- Minimize group activities that involve shared items between children. Minimize shared activities between rooms.
- Clean and disinfect toys and environmental surfaces and high touch areas, thoroughly and more often, paying special attention to infant and toddler areas. Consult with your Public Health Inspector liaison for details on disinfectant solutions.
- Emphasize the importance of hand hygiene to staff, children, parents, and visitors and ensure that all soap dispensers are full and all alcohol-based hand rub is full and not expired.
- You may be requested by the Health Unit to distribute stool specimen kits for samples during a gastrointestinal outbreak. The Health Unit will provide the stool kits along with instructions on how to use the kits.
- In some cases, staff immunization records will need to be assessed, to ensure staff are up-to-date with their immunizations and can safely work with children.